

# BioSurface Technologies Corporation

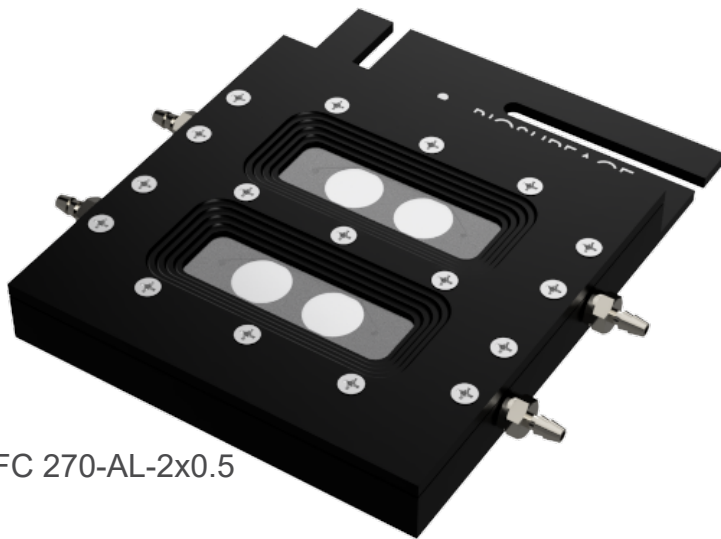
## FC 270 / 271 Coupon Evaluation Flow Cell

The models FC 270 and 271 flow cell design is based on the FC 71 but accommodates two growth channels. This allows biofilms to be grown side by side for duplicate or “control – treatment” experiments. Biofilms growing in each channel can be easily compared microscopically by simply moving the microscope stage backwards or forwards. The body of the flow cell consists of a polycarbonate or anodized aluminum flow channel. Glass viewing ports allow reflected, fluorescent, and confocal microscopy of biofilm growth in the flow channels.

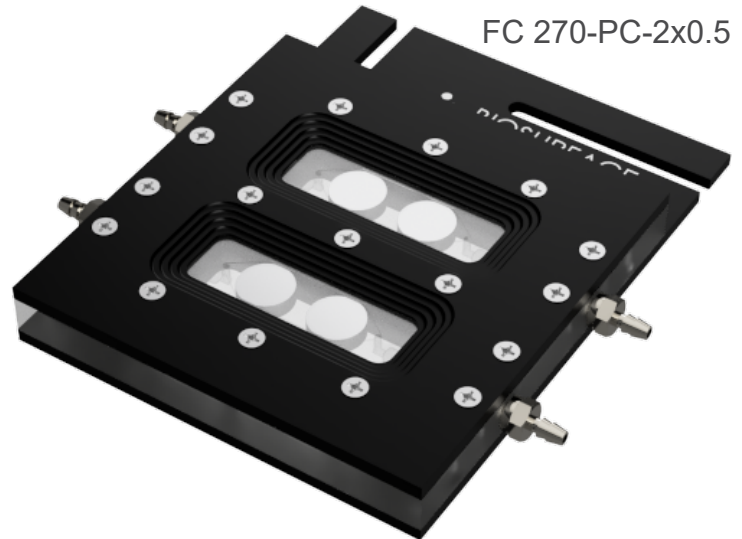
The viewing window consist of a no. 2, 24x60 mm cover slip. The glass viewing window is held in place by an aluminum cover plate. The cover plates also compress the silicone rubber gasket to provide a leak-proof flow cell.

The flow channel has been recessed to accept standard FC 71 coupon sizes (one 6x25x2 mm thick; three 10 mm diameter x 2 mm thick disc coupons; or two 0.5 inch diameter x 0.15 inch thick disc coupons) so that multiple or replicate surfaces can be monitored.

The FC 270 Flow Cell accommodates 1/8 inch ID tubing(3.2 mm) on the milled ports. The FC 271 Flow Cell comes equipped with two fully autoclavable luer fitting injection ports which may be used for inoculation, the addition of microscopy stains, or chemicals such as antimicrobial agents etc.



FC 270-AL-2x0.5

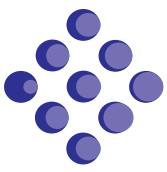


FC 270-PC-2x0.5

FC 270-PC	Dual Channel Flat Plate Flow Cell (polycarbonate channel)	\$860.00
FC 270-AL	Dual Channel Flat Plate Flow Cell (anodized aluminum channel)	\$1,050.00
FC 271-PC	Dual Channel Flat Plate Flow Cell with injection ports (polycarbonate channel)	\$1,150.00
FC 271-AL	Dual Channel Flat Plate Flow Cell with Injection Ports (anodized aluminum channel)	\$1,340.00
	Includes one set of polycarbonate coupons, spare gasket, spare screws, and 1 box of no. 2 coverslips	
FC 64	Silicone Gasket (2/pk, fits FC 270,271, 280, 281 Dual Channel Flow Cells)	\$20.00
FC 65	Silicone Gasket (2/pk, fits FC 274,275, 284, 285 Dual Channel Flow Cells)	\$20.00
FC 48382-2	24 x 60 mm No. 2 Glass Coverslip (1 oz. box)	\$23.00

ALL PRICING BASED ON PAYMENT TERMS OF NET 30 DAYS.

Pricing shown is for domestic US Market. Please contact BioSurface Technologies Corporation, or one of our international distributors for international pricing. International customers will incur additional charges associated with shipping, insurance, import duties, taxes, and fees that are not covered by BioSurface Technologies Corporation. Prices are subject to change without notice.



# BioSurface Technologies Corporation

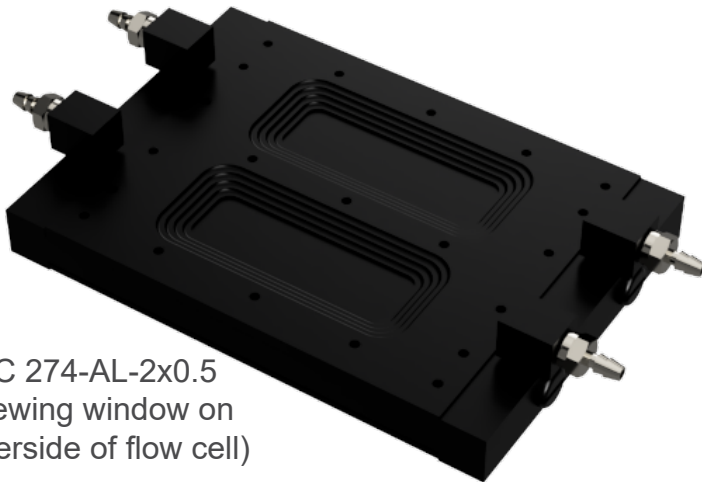
## FC 274 / 275 Coupon Evaluation Flow Cell

The models FC 274 and 275 flow cell design is based on the FC 71 but accommodates two growth channels. This design allows biofilms to be grown side by side for duplicate or “control – treatment” experiments. The body of the flow cell consists of a polycarbonate or anodized aluminum flow channel. Glass viewing ports allow reflected, fluorescent, and confocal microscopy of biofilm growth in the flow channels. The overall length and width of the flow cells are designed to fit into a 96-well micro-titer plate holder on upright or inverted microscope stages.

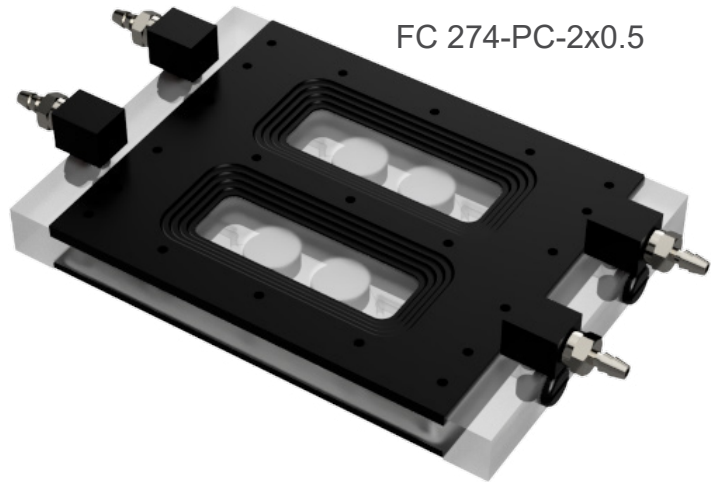
The viewing window consist of a no. 2, 24x60 mm cover slip. The glass viewing window is held in place by an aluminum cover plate. The cover plates also compress the silicone rubber gasket to provide a leak-proof flow cell.

The flow channel has been recessed to accept standard FC 71 coupon sizes (one 6x25x2 mm thick; three 10 mm diameter x 2 mm thick disc coupons; or two 0.5 inch diameter x 0.15 inch thick disc coupons) so that multiple or replicate surfaces can be monitored.

The FC 274 Flow Cell accommodates 1/8 inch ID tubing(3.2 mm) on the milled ports. The FC 275 Flow Cell comes equipped with two fully autoclavable luer fitting injection ports which may be used for inoculation, the addition of microscopy stains, or chemicals such as antimicrobial agents etc.



FC 274-AL-2x0.5  
(viewing window on  
underside of flow cell)



FC 274-PC-2x0.5

FC 274-PC	Dual Channel Flat Plate Flow Cell (polycarbonate channel)	\$900.00
FC 274-AL	Dual Channel Flat Plate Flow Cell (anodized aluminum channel)	\$1,100.00
FC 275-PC	Dual Channel Flat Plate Flow Cell with injection Ports (polycarbonate channel)	\$1,190.00
FC 275-AL	Dual Channel Flat Plate Flow Cell with Injection Ports (anodized aluminum channel)	\$1,390.00
	Includes one set of polycarbonate coupons, spare gasket, spare screws, and 1 box of no. 2 coverslips	
FC 64	Silicone Gasket (2/pk, fits FC 270,271, 280, 281 Dual Channel Flow Cells)	\$20.00
FC 65	Silicone Gasket (2/pk, fits FC 274,275, 284, 285 Dual Channel Flow Cells)	\$20.00
FC 48382-2	24 x 60 mm No. 2 Glass Coverslip (1 oz. box)	\$23.00

ALL PRICING BASED ON PAYMENT TERMS OF NET 30 DAYS.

Pricing shown is for domestic US Market. Please contact BioSurface Technologies Corporation, or one of our international distributors for international pricing. International customers will incur additional charges associated with shipping, insurance, import duties, taxes, and fees that are not covered by BioSurface Technologies Corporation. Prices are subject to change without notice.